

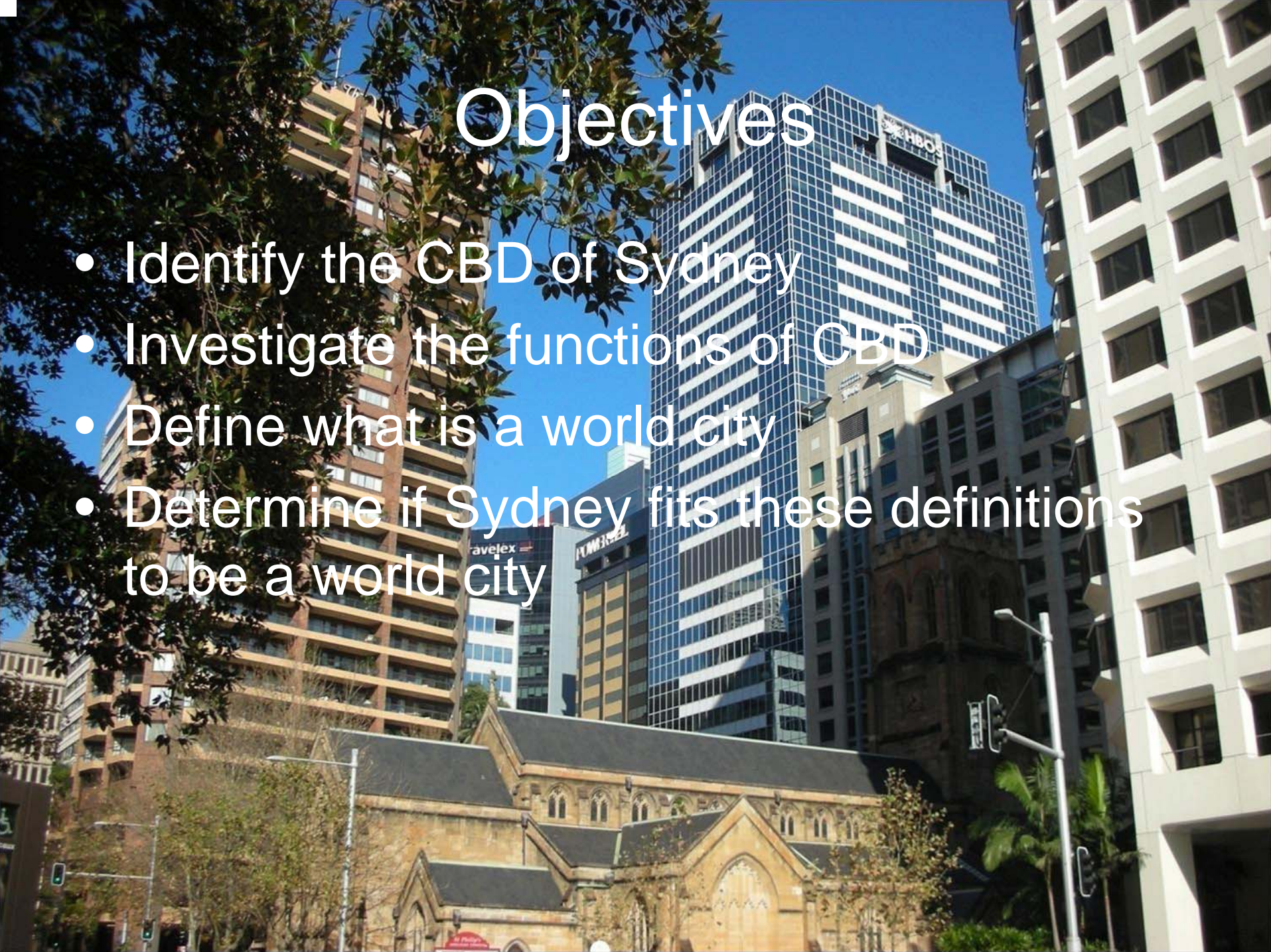
A photograph of the Sydney CBD skyline. In the foreground, there is a large, historic brick church with Gothic-style windows. Behind it, several modern skyscrapers rise into a clear blue sky. One prominent glass skyscraper has 'NBS' on its top. To its left, a building has 'avelex' and 'PUMSTEEL' signs. On the far right, a white, modern building with a grid of windows is visible. The text 'The City Forming Processes - CBD of Sydney' is overlaid in white, semi-transparent font across the middle of the image.

The City Forming Processes - CBD of Sydney

Group A

Objectives

- Identify the CBD of Sydney
- Investigate the functions of CBD
- Define what is a world city
- Determine if Sydney fits these definitions to be a world city



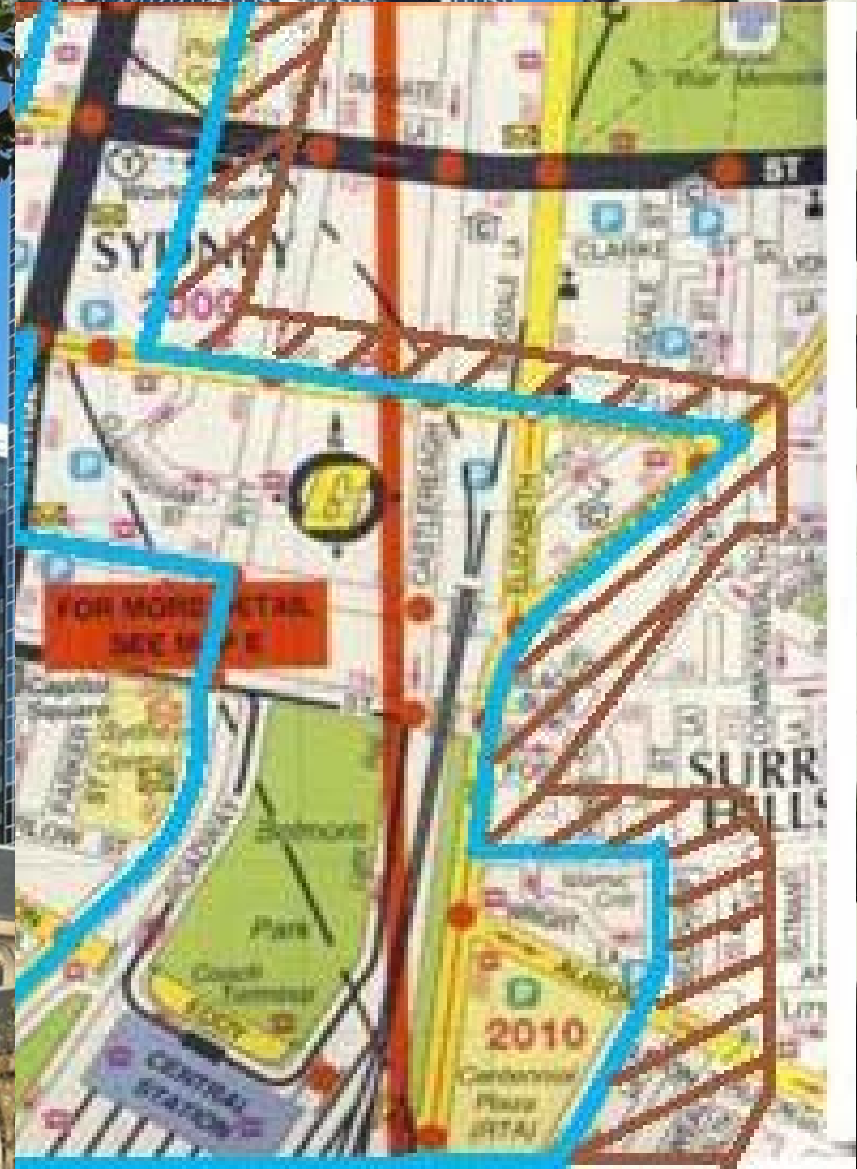
CBD

- Characteristics:
 - Height of building: high-rise
 - Density of buildings: high
 - Land uses: commercial dominant
 - Order of goods: high
 - Headquarters
 - Professional services



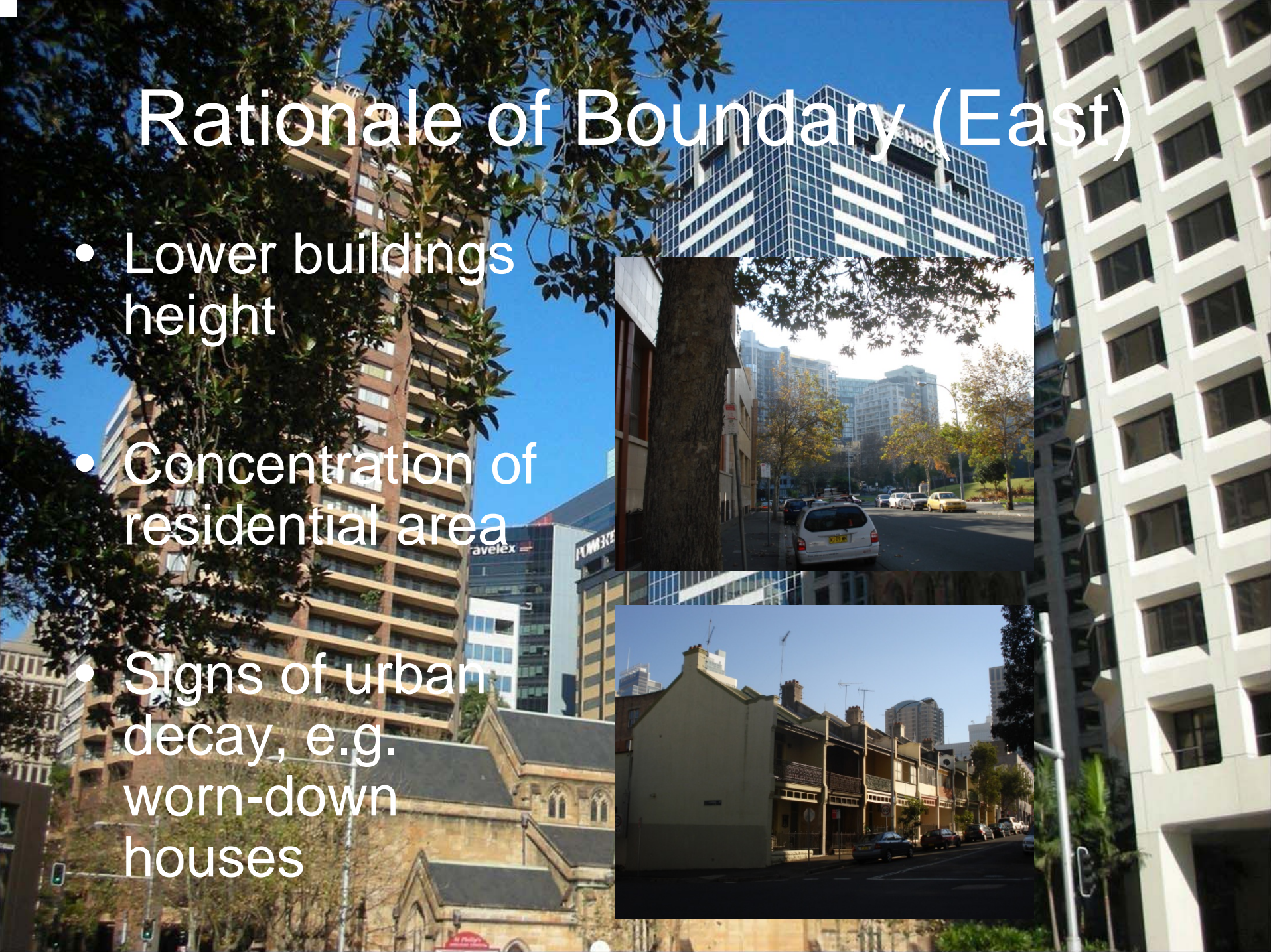
CBD Boundary (East)

- Along Wentworth Street and Elizabeth Street



Rationale of Boundary (East)

- Lower buildings height
- Concentration of residential area
- Signs of urban decay, e.g. worn-down houses



Rationale of boundary (East)

- Existence of warehouses and wholesale activities



- Trucks and heavy vehicles can be seen



Rationale of Boundary (East)

- Cheap shopping and low grade restaurants
- Road side parking



CBD Boundary (South)

- Along Goulburn Street



Rationale of Boundary (South)

- Lower buildings
- Lower order of goods
- Worn out building façade



CBD Boundary (West)

- Along Pyrmont Street



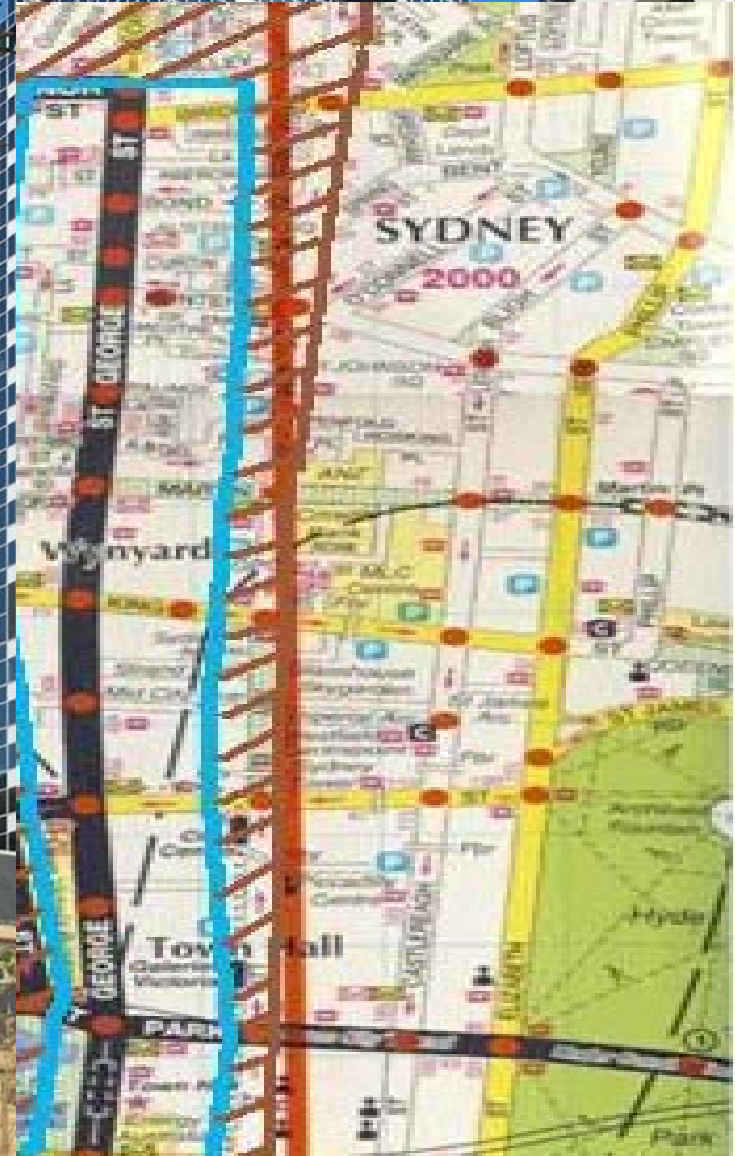
Rationale of Boundary (West)

- Obvious change of land use (from commercial to residential)
- Lower pedestrian flow
- Fewer vehicles on roads
- Condition of the buildings



CBD Boundary (North)

- Along Grosvenor Street



Rationale of Boundary (North)

- Land use changes
- Fewer pedestrian and traffic
- Vacancy



Functions of CBD (Sydney)

- Generalization:
 - Commercial
 - Institutional
 - Transportation
 - Recreational
 - Cultural
 - Residential





World City

Is Sydney a world city?

Criteria of world city

- Economical
- Political
- Cultural
- Accessibility
- Historical
- Landmark(s)



Economical

- Headquarters of trans-national corporations (90 banks):
 - IBM
 - HSBC
 - Rabobank
 - City bank
 - LG



- 
- Prosperous stock exchange
 - Sydney is the largest corporate and financial centre
 - 64.3 million contracts traded in 2005
 - best long-term investment
 - Conventional and Exhibition centers

Political

- Center of administration
 - NSW Department of Commerce
 - Family court of Australia



Cultural

- Opera House
- Universities
- Museums
 - Dinosaur exhibitions
- Festivals
 - Small Italian
 - World Youth Day
- Multi-racial
 - Chinatown
 - Vietnamese town



Accessibility

- International airport
- Ports
- *Railway network



Historical

- Colonial background
- Heritages preservation & revitalization
 - Queens' Vitoria Building
 - Museum of Sydney
 - Government House
 - Royal Botanic Garden



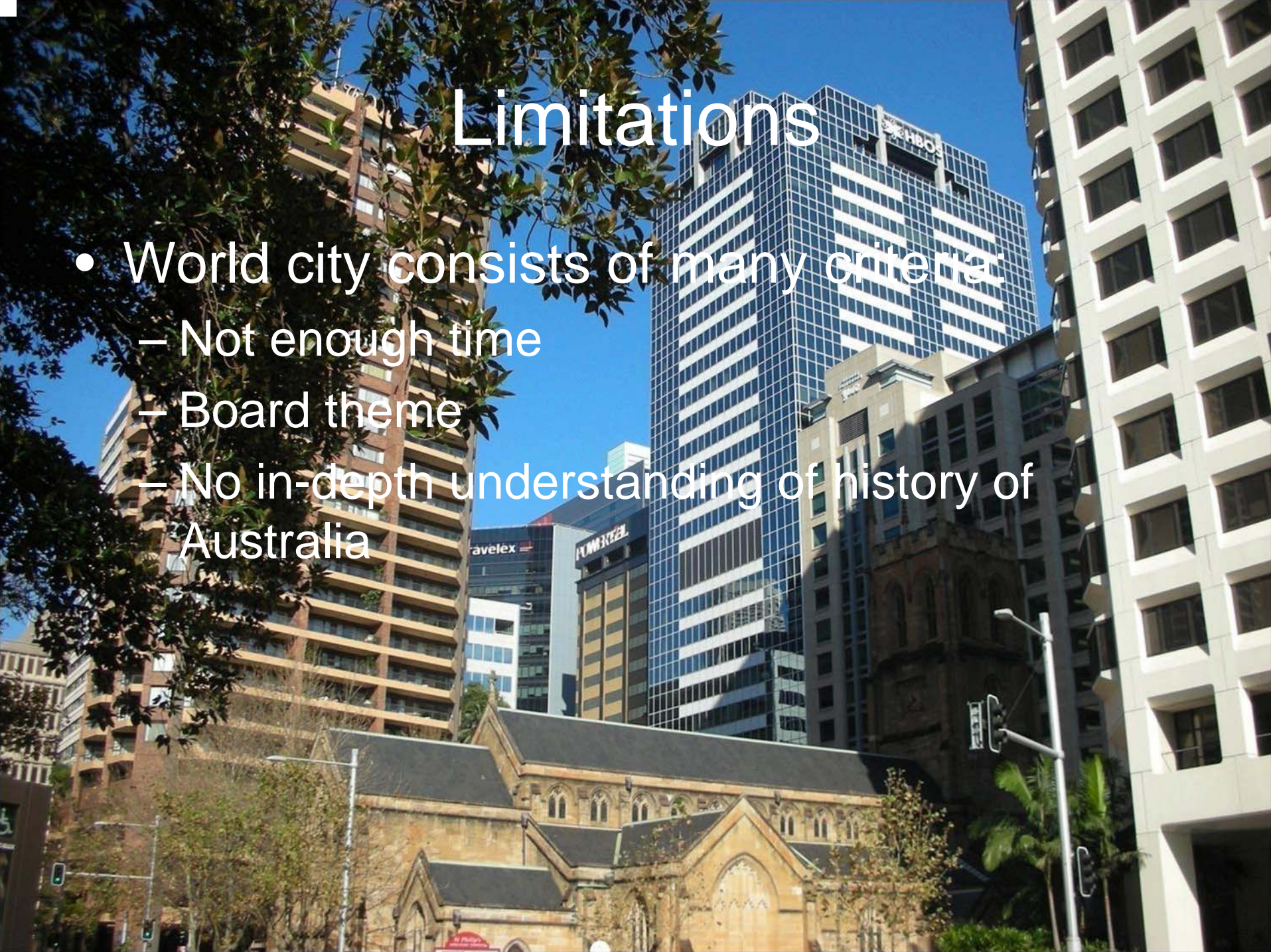
Landmark

- Opera House
- Sydney Harbor bridge



Limitations

- World city consists of many criteria:
 - Not enough time
 - Board theme
 - No in-depth understanding of history of Australia



A city street scene featuring a mix of modern and historic architecture. In the foreground, a historic stone church with Gothic-style windows and a dark roof is visible. Behind it, several modern skyscrapers rise against a clear blue sky. One prominent glass skyscraper has 'HBO' signage at the top. To its left, a building has 'avelex' and 'COMSTEL' signs. On the right, a white modern building with a grid of windows is partially visible. The text 'The End!!!' is overlaid in large, bold, purple letters across the center of the image. Below the text, a large purple bracket is drawn, spanning the width of the text.

The End!!!